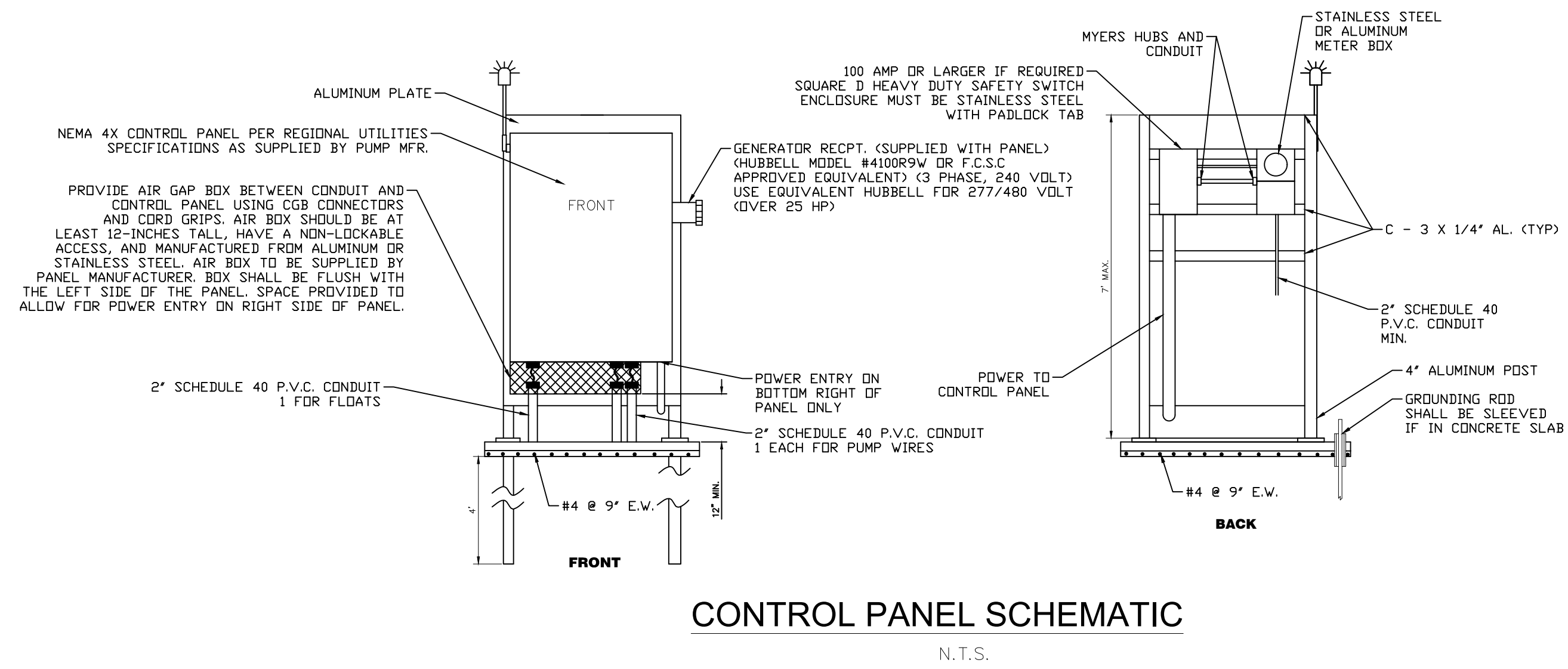
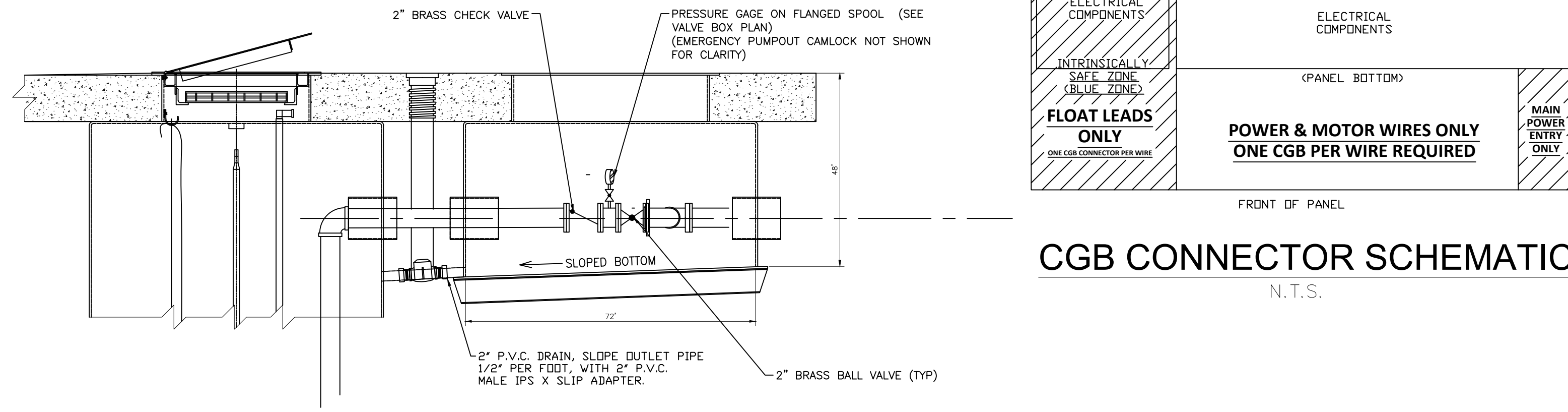


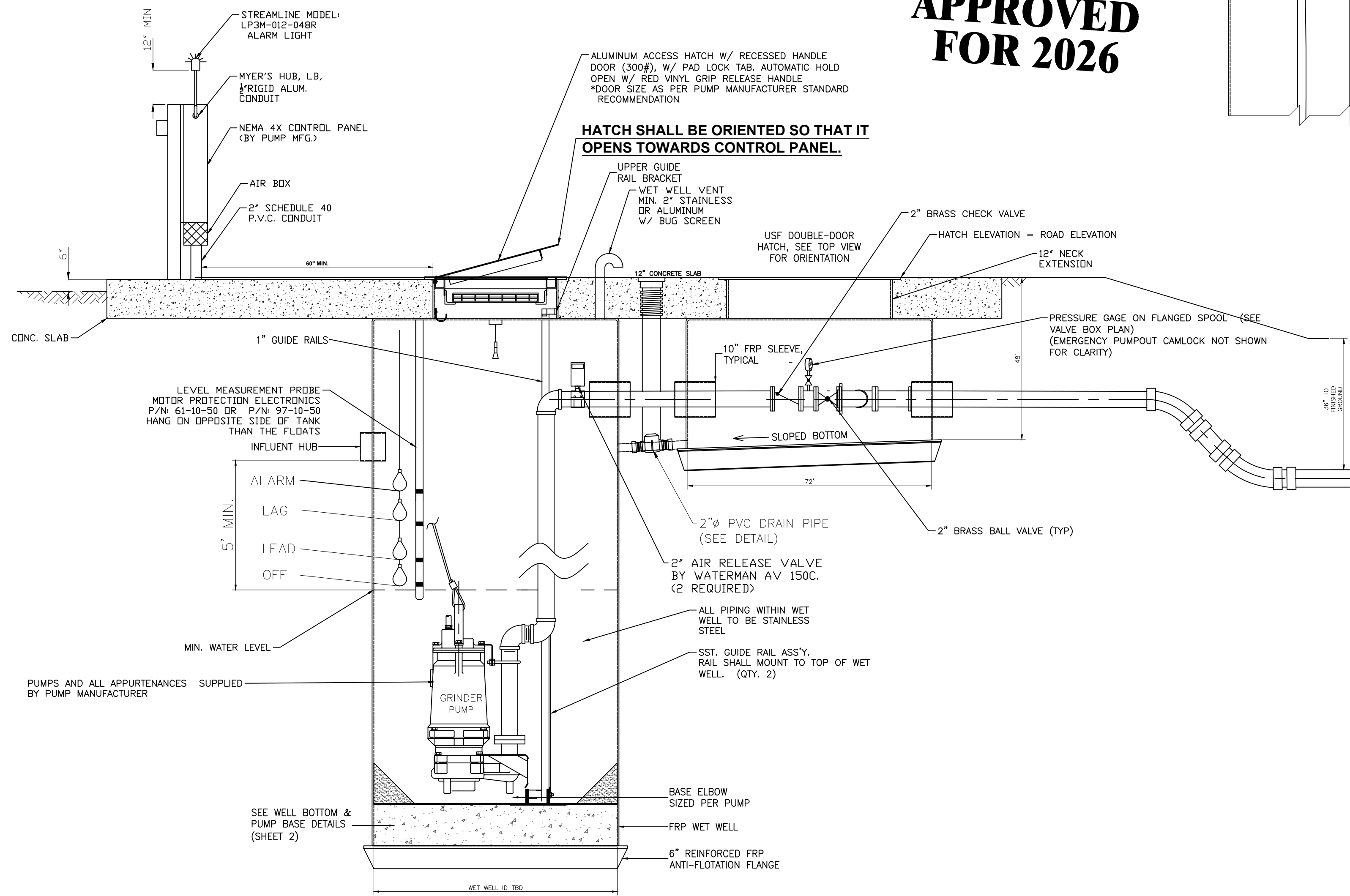
TYPICAL WET WELL PLAN
N.T.S.



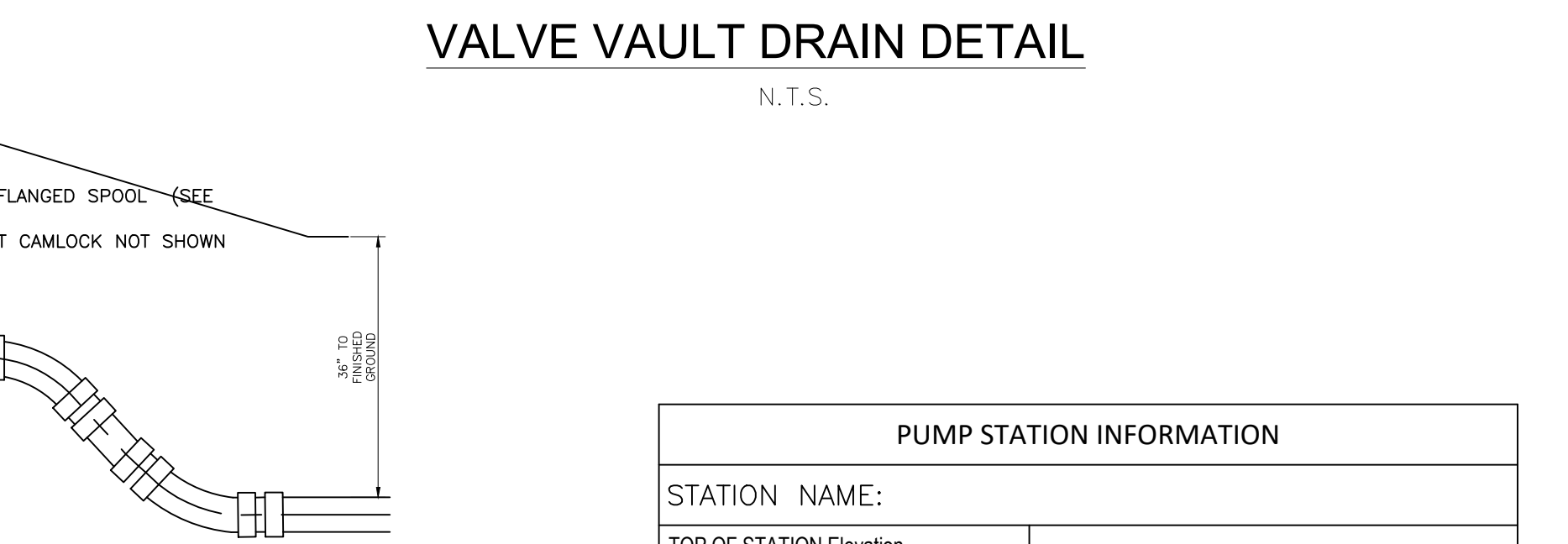
CONTROL PANEL SCHEMATIC
N.T.S.



CGB CONNECTOR SCHEMATIC
N.T.S.



TYPICAL WET WELL PLAN
N.T.S.



VALVE VAULT DRAIN DETAIL
N.T.S.

APPROVED FOR 2026

PUMP STATION INFORMATION	
STATION NAME:	
TOP OF STATION Elevation	
INFLUENT INVERT Elevation	
HIGH ALARM Elevation	
2nd PUMP ON Elevation	
1st PUMP ON Elevation	
PUMPS OFF Elevation	
BOTTOM OF STATION Elevation	
WET WELL DEPTH	
WET WELL DIAMETER (I.D.)	
VALVE BOX DEPTH	
VALVE BOX DIAMETER (I.D.)	
DISCHARGE PIPE SIZE	
FORCE MAIN PIPE SIZE	

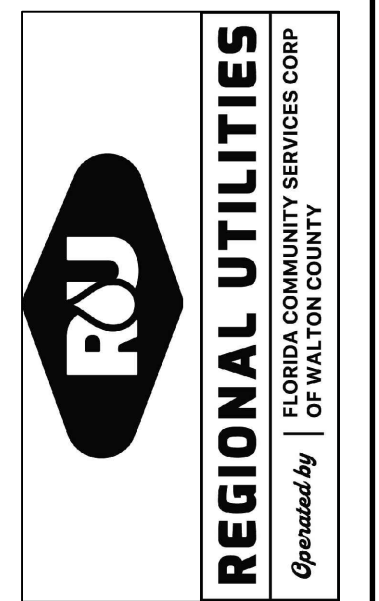
PUMP INFORMATION	
NUMBER OF PUMPS	
PUMP MANUFACTURER	
PUMP MODEL	
IMPELLER	
HP	
VOLTAGE (3 PHASE)	120/208/240 Volts
RPM	
GPM (High System Head)	
GPM (Low System Head)	
TDH, FT (High System Head)	
TDH, FT (Low System Head)	

GENERAL NOTES:

- GENERAL NOTES:**
- VALVE VAULT SHALL BE SIZED TO PERMIT EASY REMOVAL OF CHECK VALVE
 - ALL LOCATIONS WHERE PIPES ENTER OR LEAVE THE WET WELL OR VALVE VAULT SHALL BE MADE WATERTIGHT WITH WALL SLEEVE OR NON-SHRINK GROUT.
 - THERE SHALL BE NO VALVES OR ELECTRICAL JUNCTION BOXES IN WET WELL.
 - WET WELL AND VALVE VAULT COVERS SHALL BE ALUMINUM WITH 316 S.S. HARDWARE SIZE AS REQUIRED BY PUMP MANUFACTURER AND APPROVED BY FLORIDA COMMUNITY SERVICES.
 - FLEXIBLE COUPLING IF USED SHALL BE SLEEVE TYPE.
 - ALL HARDWARE IN WET WELL AND VALVE BOX TO BE 316 STAINLESS STEEL.
 - ALL ENCLOSURES SHALL BE NEMA 4X RATED.
 - ALL MECHANICAL JOINT FITTINGS ON PRESSURE PIPE SHALL HAVE BOTH "MEGALUG" TYPE JOINT RESTRAINING GLANDS AND THRUST BLOCKS.
 - THE CONTRACTOR IS RESPONSIBLE FOR OBTAINING AND MEETING THE REQUIREMENTS OF REGIONAL UTILITIES STANDARD DETAILS AND SPECIFICATIONS LATEST EDITION.
 - ANY LOCATION WHERE PRESSURE PIPELINE CURVATURE EXCEEDS MANUFACTURERS' SPECIFICATIONS; APPROPRIATE MECHANICAL JOINT FITTINGS SHALL BE USED.
 - ALL 2-INCH VALVES SHALL BE BALL TYPE - 2-INCH GATE VALVES SHALL NOT BE USED.
 - ALL TIE-IN TO EXISTING PRESSURIZED PIPELINES SHALL BE BY TAPPING SLEEVE (3 INCH TAP AND LARGER) (OR TAPPING SADDLE, 2 INCH TAP AND SMALLER) AND VALVE W/ VALVE BOX.
 - DEVELOPERS OF PRIVATE PROJECTS SHALL PROVIDE ALL WETLANDS PERMITS NECESSARY FOR UTILITY CONSTRUCTION.
 - ALL GRINDER LIFT STATIONS LOCATED IN A PUBLIC RIGHT-OF-WAY MUST BE DESIGNED AND CONSTRUCTED OF REINFORCED CONCRETE AS PER THE SECTION TITLED "STRUCTURAL AND OTHER NOTES" DETAILED BELOW.
 - ALARM LIGHT SHALL BE VISIBLE ABOVE ANY AND ALL OBSTRUCTIONS.
 - UNISTRUT SHALL NOT BE USED ON CONTROL PANEL BACKBOARD.

NO.	DATE	APPR.	REVISION

4432 HWY 98 EAST
SANTA ROSA BEACH, FL 32459
Phone: (850) 231-5114
WWW.REGIONALUTILITIES.NET



PROJECT NAME:
SHEET TITLE:
SCALE:
DRAWN BY: RT & WK
CHECKED BY: RAD
PROJECT NO.: 000-000
DRAWING SCALE: N.T.S.
PLOT DATE:
SHEET NO. 1 OF 2
SHEET: GS-F1

LIFT STATION (GRINDER PUMPS)
FIBERGLASS STANDARD DETAIL